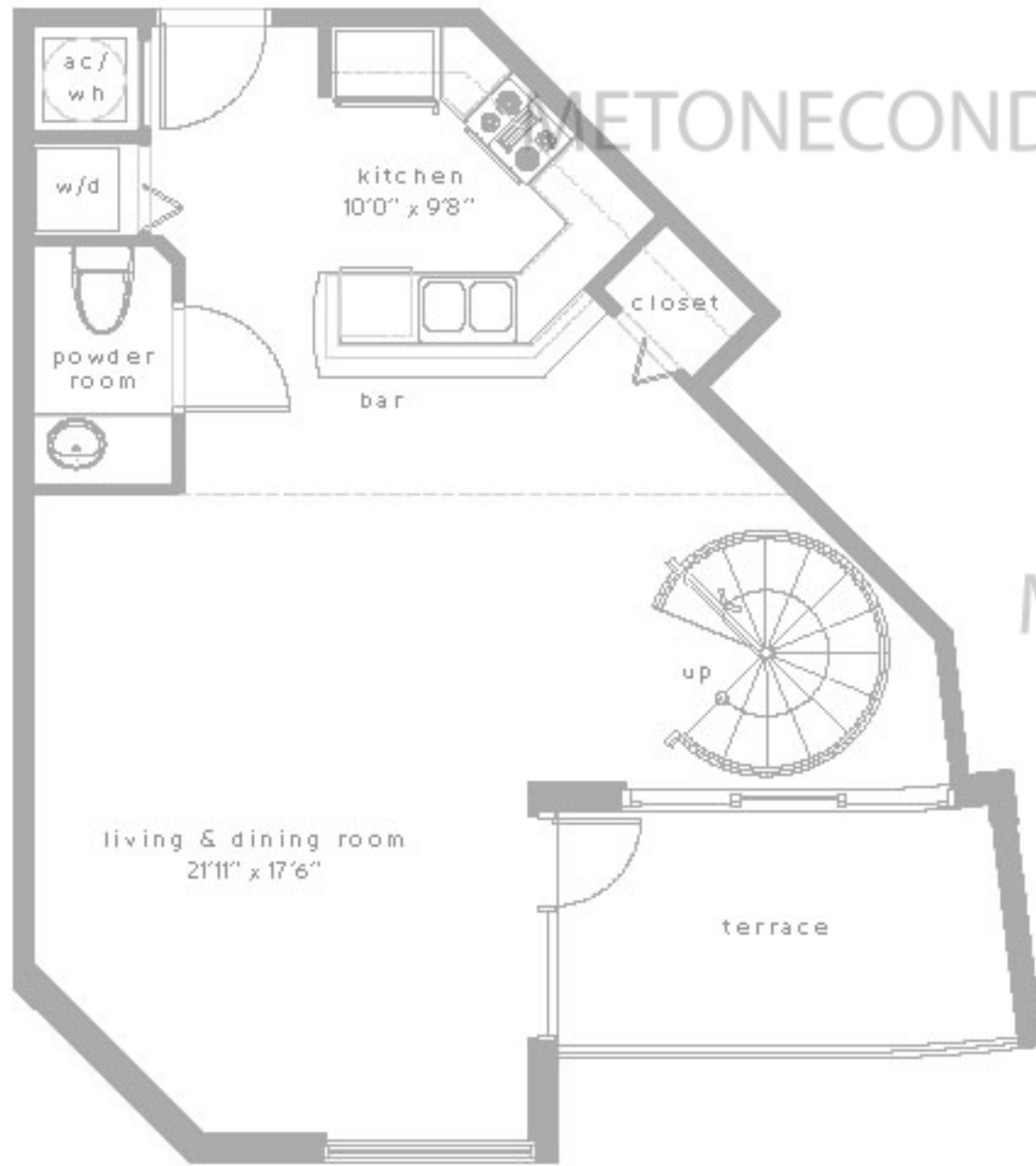
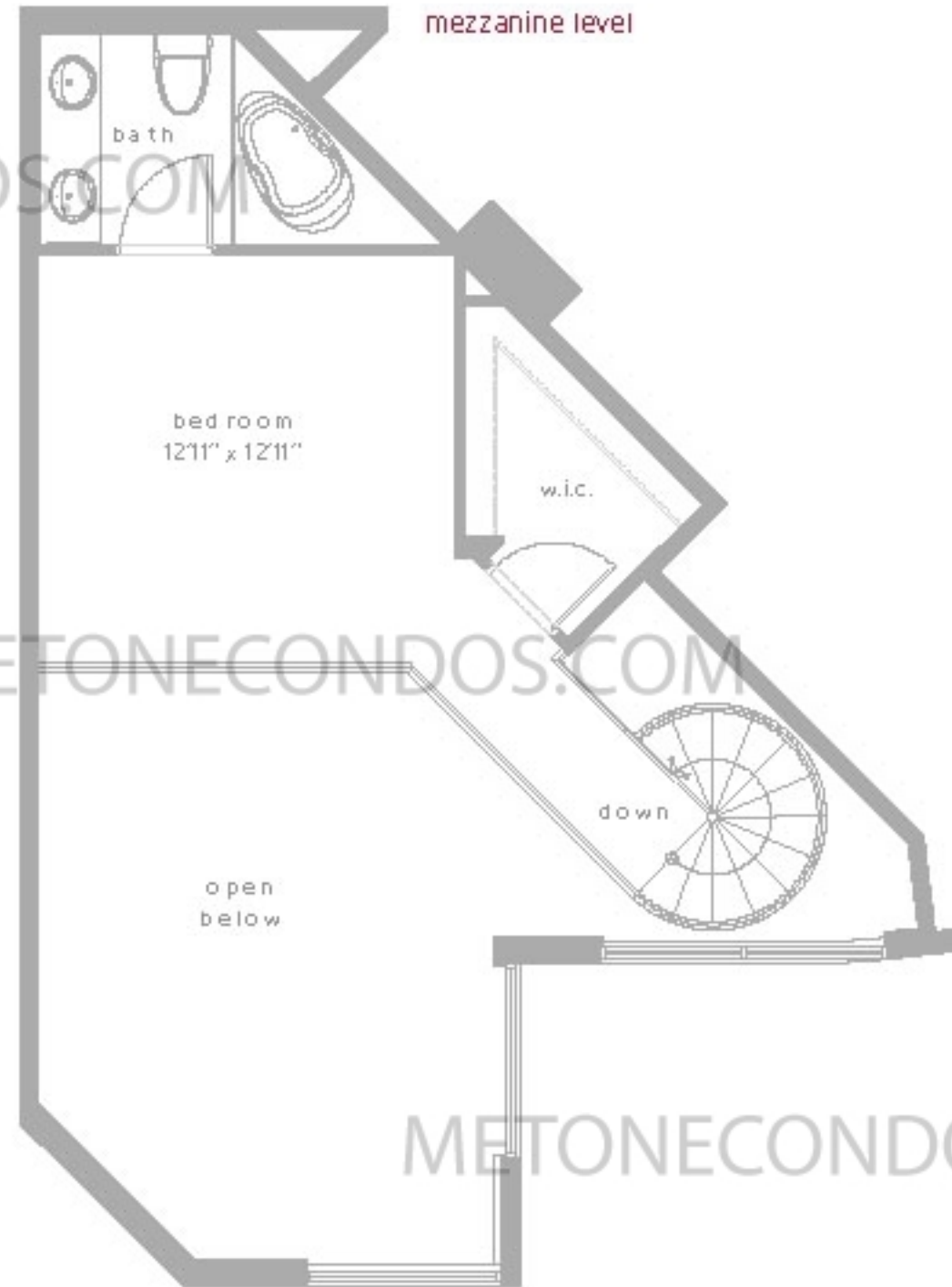


flat level



mezzanine level

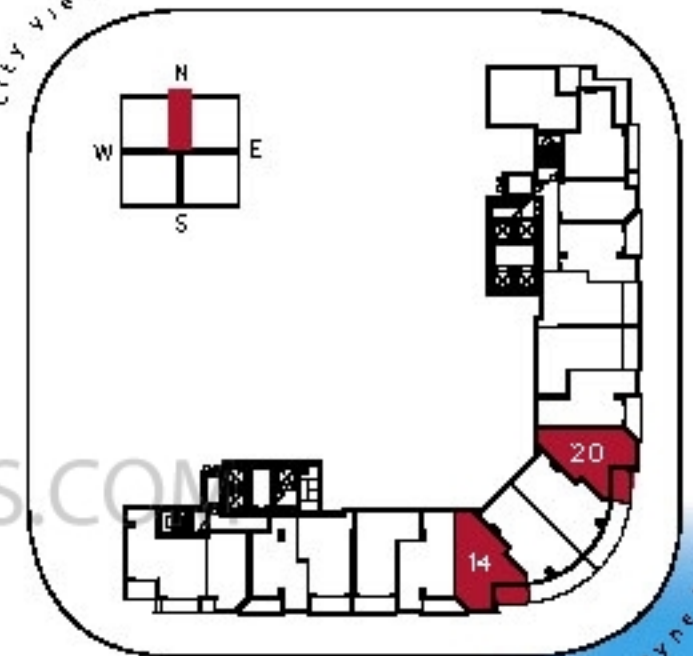


loft residences

**loft g**  
1 bed & 1-1/2 bath

|           |             |                     |
|-----------|-------------|---------------------|
| residence | 958 sq.ft.  | 89.0 m <sup>2</sup> |
| terrace   | 91 sq.ft.   | 8.4 m <sup>2</sup>  |
| total     | 1049 sq.ft. | 97.4 m <sup>2</sup> |

city view



biscayne bay